

Village of Johnson Creek

125 Depot Street
 P.O. Box 238
 Johnson Creek, WI 53038
 Phone (920) 699-2296
 Fax (920) 699-2292 Email: info@johnsoncreekwi.org
 Website: www.johnsoncreek-wi.us



Crossroads With A Future

2024 Johnson Creek Fall Tree Order*** (Only Village of Johnson Creek residents are eligible to purchase trees)

Quantity	Description		Price**	Amount
	**Elm -Accolade or Princeton or Triumph	2" trunk	\$270.00	
	**Kentucky Coffeetree	2" trunk	\$310.00	
	**Flowering Pear – Cleveland Select	2" trunk	\$290.00	
	**Hackberry	2" trunk	\$310.00	
	**Linden – American Sentry, Greenspire, Redmond	2" trunk	\$270.00	
	**Locust – Skyline, Imperial or Shademaster	2" trunk	\$270.00	
	**Maple – Autumn Blaze, Fall Fiesta, Green Mountain, Marmo, Sienna Glen, State Street	2" trunk	\$310.00	
	**Maple - Northwoods	2" trunk	\$270.00	
	**Northern Catalpa	2" trunk	\$290.00	
	**Serviceberry Autumn Brilliance (tree form)	1 3/4" trunk	\$310.00	
	**Thornless Cockspur Hawthorn	1 1/2" trunk	\$270.00	
	**Japanese Tree Lilac –Single Stem (can be used as street tree under power lines)	2 " trunk	\$310.00	
	*Japanese Tree Lilac Ivory Silk- Multistem	6'	\$225.00	
	*Arborvitae- Techny	5'	\$235.00	
	*Arborvitae- Pyramidal	5'	\$200.00	
	*Arborvitae- Dark Green	5'	\$175.00	
	*Arborvitae- Green Giant (deer resistant)	5'	\$250.00	
	*Birch Whitespire (Single Stem), Whitespire (Multi stem)	1 1/2" trunk	\$250.00	
	*Crab – Red Jewel (white flower), Purple Prince (red flower)	2" trunk	\$235.00	
	*Crab – Royal Raindrop (Pinkish Red Flower) Starlite (white flower) Gladiator (bright pink flower)	2" trunk	\$235.00	
	*Evergreens- Black Hill Spruce, Norway Spruce, White Pine	6' tall	\$350.00	
	* London Planetree	2" trunk	\$300.00	
	*Eastern Redbud- Multi Stem	5" tall	\$250.00	
	*Oak- Swamp White	2" trunk	\$310.00	
			Total	

Name: _____ Phone: _____

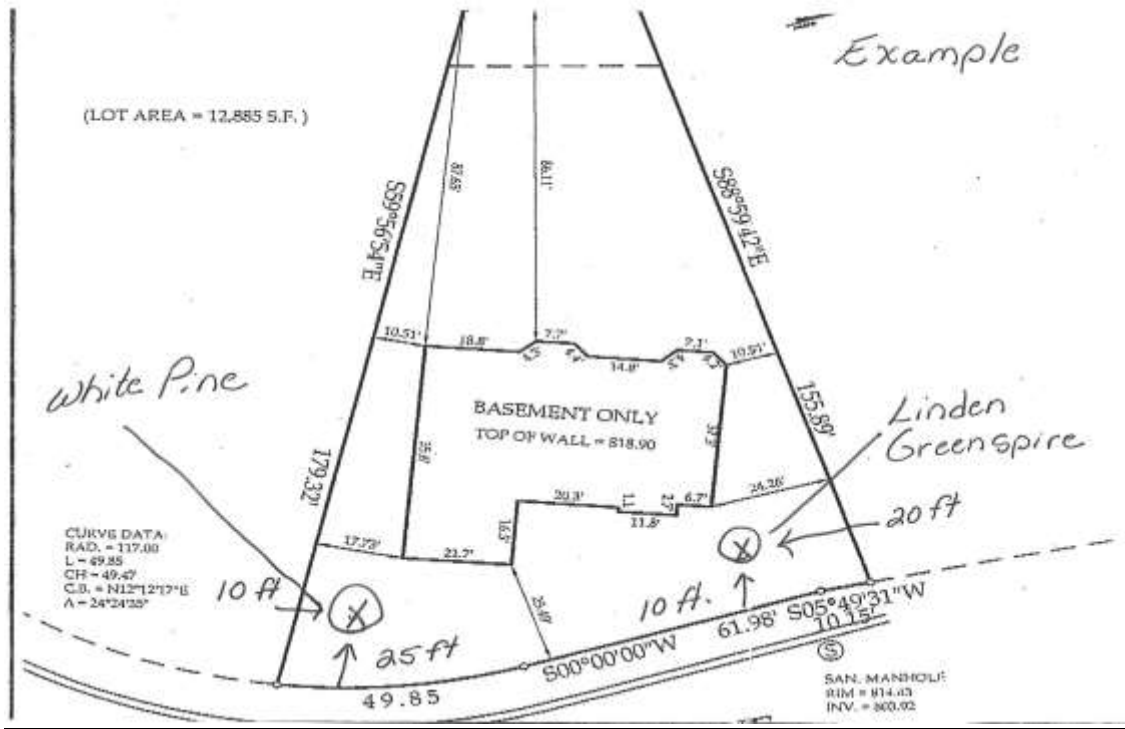
Address: _____ Email: _____

- Make check payable to: Village of Johnson Creek. (Office inf. Tree-100-46810 Private pay)**
- Attach a plat of your property, with location of Tree(s) – See Example next page.**
- Order and payment must be received by October 1, 2024.**
- Place a stake where tree is to be planted in your yard. (Village Hall will call you with staking date.)**

*Yard Tree ** Can be used as terrace/street tree or in yard.

***Prices include planting of tree and mulching. Trees are guaranteed up to one year and residents are responsible for proper care and watering.

Disclaimer: Tree service uses a Bobcat to dig holes and bring trees to hole for planting, which may result in ruts to lawn. Village and Tree service will not be responsible for damage or repairs.



Tree Care Tips:

Transplanting trees causes stress, which can permanently impair a tree's long-term health. A little tender loving care will go a long way toward ensuring your new tree will survive and thrive!

- 1) Give the tree a good soaking (provide a trickle of water around the root ball for about an hour) two or three times a week until the first freeze.
- 2) The use of a stimulator such as Superthrive is encouraged to promote root growth.
- 3) It is advisable to maintain the mulch around the base of the tree for at least the next decade. Mulch absorbs water when it rains and holds the moisture in the ground to nourish the tree for days and weeks after rains have stopped. The wider around the tree the mulch, the more effective it is.
- 4) Water transplanted trees, especially for the first three years after they have been transplanted, once the spring rains have stopped and the weather turns dry. Give each tree a good soaking (5 gallons or more of water) every week or two during the dry months of July and August, and into September, if necessary.